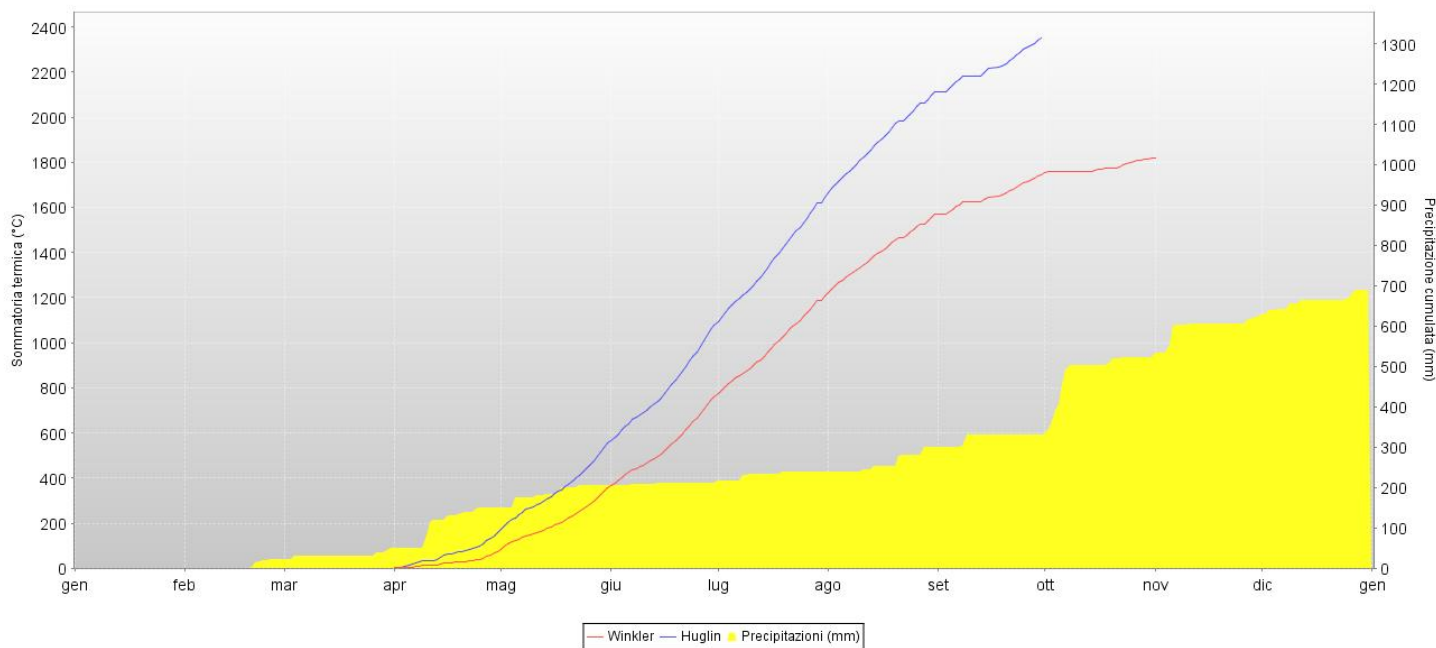
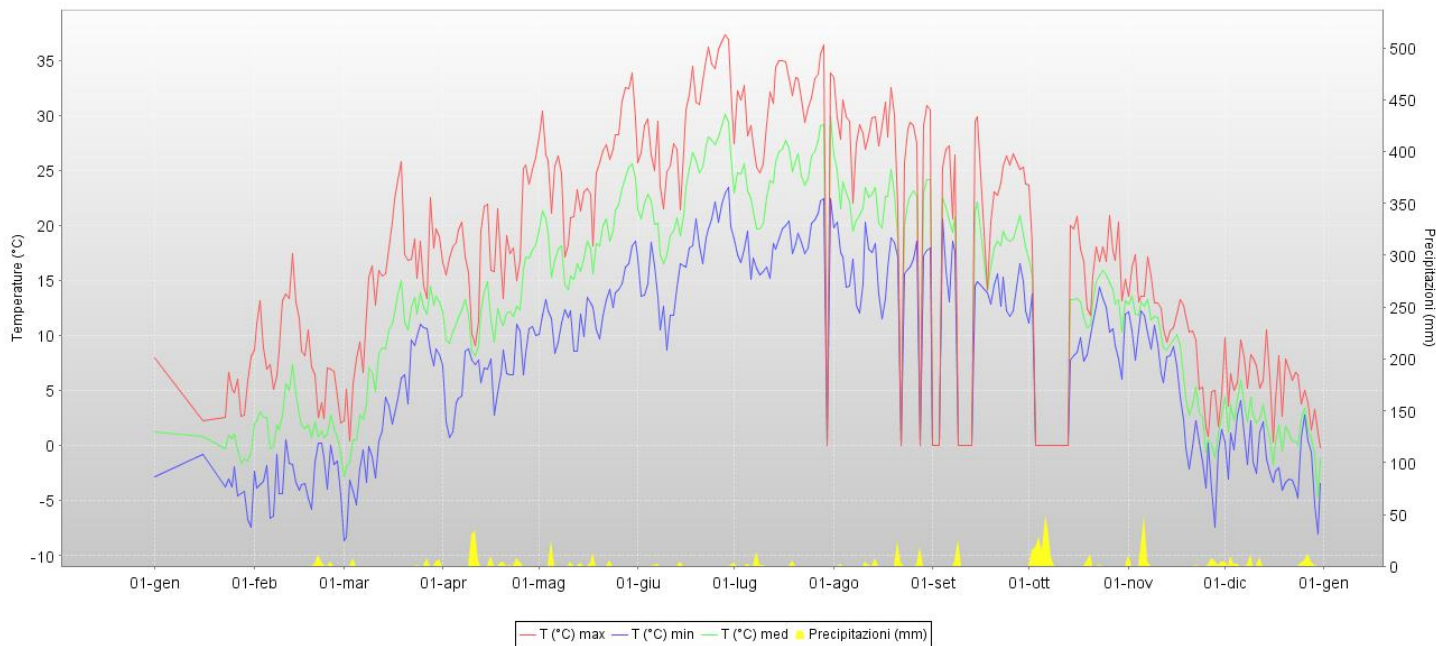




## Stazione Agrometeorologica di Sabar Anno 2005



Aggiornamento al 05-01-2011	Valori annuali	Valori mensili											
		1	2	3	4	5	6	7	8	9	10	11	12
T min. Aria (°C)	-8.6	-7.4	-8.6	-8.6	0.6	8.3	8.6	15.1	11.5	11.1	6.0	-7.4	-8.1
T media Aria (°C)	13.4	0.0	1.9	8.5	12.5	19.1	23.4	24.9	22.4	19.1	13.5	7.2	1.6
T max. Aria (°C)	37.2	8.6	17.3	25.7	28.0	33.7	37.2	36.4	33.4	29.8	23.6	17.2	10.5
T media Suolo (°C)													
Precipitaz. (mm)	689.8	0.4	22.3	27.3	100.0	54.2	7.2	25.9	61.8	30.1	193.0	101.6	65.6
Num. gg. pioggia	72.0	0.0	5.0	5.0	9.0	6.0	2.0	6.0	8.0	2.0	9.0	9.0	11.0
Indice Winkler	1816				76	280	404	447	360	176	71		
Indice Huglin	2350				158	395	522	567	470	236			

I dati di temperatura aria minima e massima sono da intendersi come valori estremi mensili.

