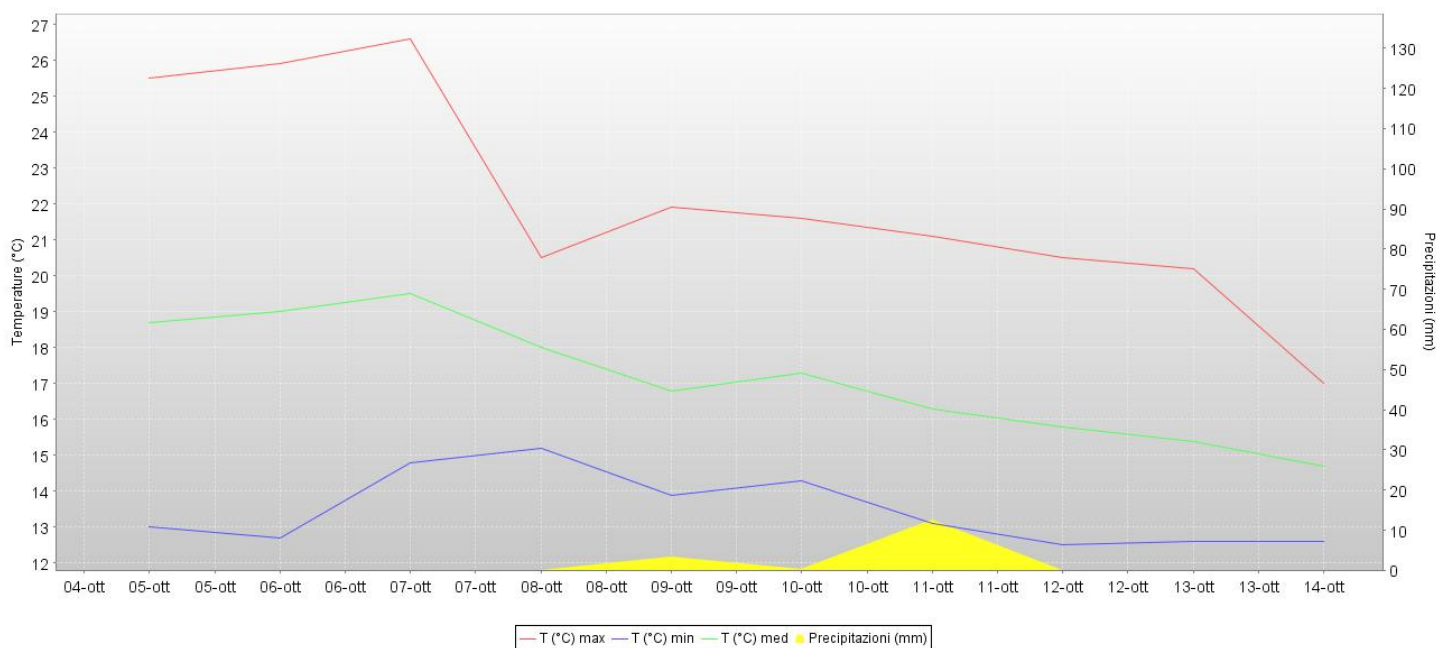
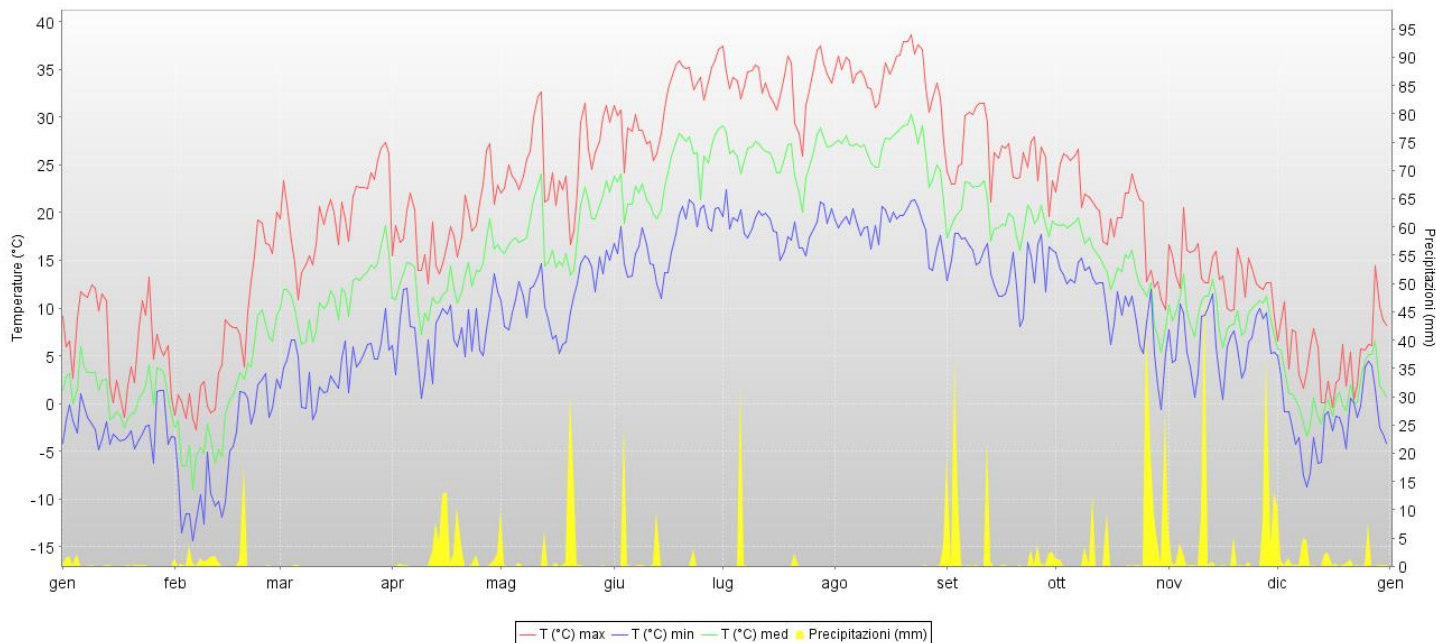




Stazione Agrometeorologica di Sabar Anno 2012



Aggiornamento al 15-10-2014	Valori annuali	Valori mensili											
		1	2	3	4	5	6	7	8	9	10	11	12
T min. Aria (°C)	-14.3	-6.1	-14.3	-1.7	0.6	5.3	11.0	15.0	12.8	8.1	-0.6	0.4	-8.6
T media Aria (°C)	13.8	1.2	0.4	11.4	12.8	18.3	24.2	26.0	26.4	19.7	14.3	9.3	1.1
T max. Aria (°C)	38.5	13.1	20.0	27.2	27.2	32.5	37.4	37.4	38.5	31.5	26.6	20.5	14.3
T media Suolo (°C)													
Precipitaz. (mm)	659.5	8.5	32.4	0.4	73.2	65.5	38.0	34.0	23.2	105.7	136.7	150.5	39.4
Num. gg. pioggia	74.0	4.0	10.0	0.0	12.0	4.0	3.0	2.0	2.0	10.0	11.0	13.0	9.0
Indice Winkler	2222				94	265	440	513	527	300	151		
Indice Huglin	2817				179	393	578	658	677	415			

I dati di temperatura aria minima e massima sono da intendersi come valori estremi mensili.

