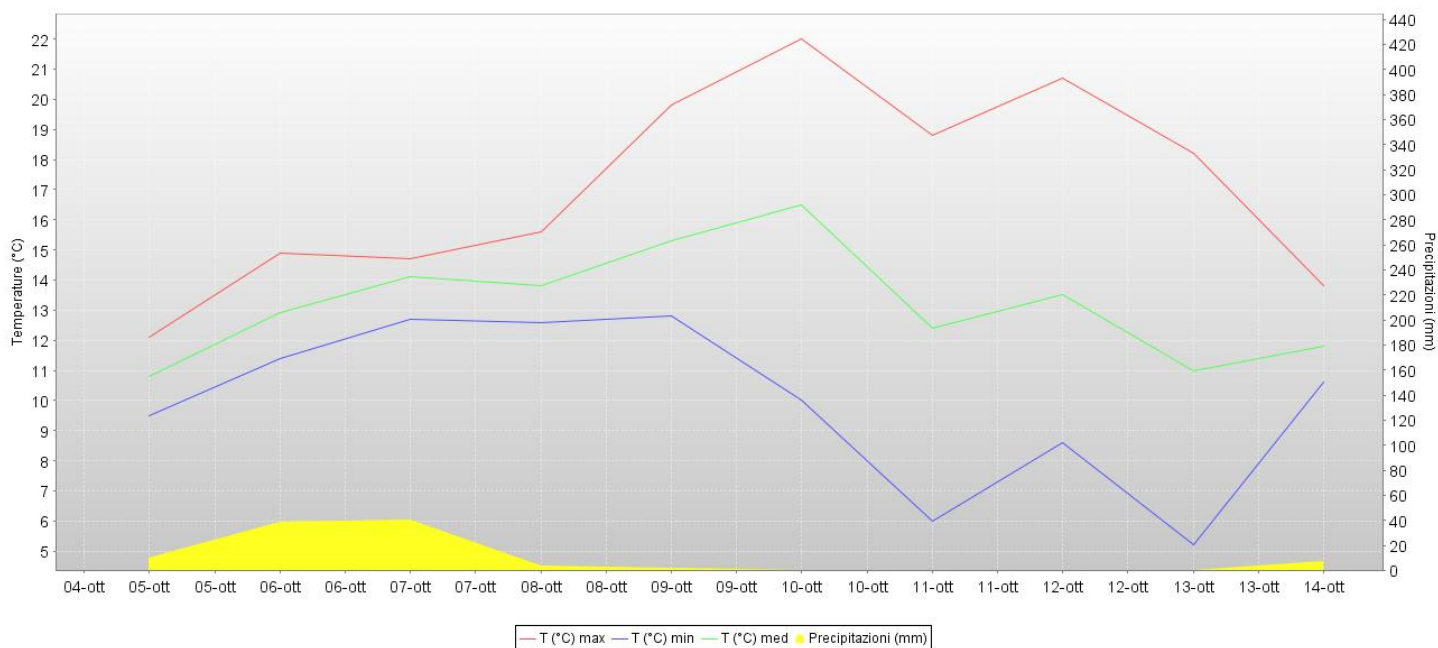
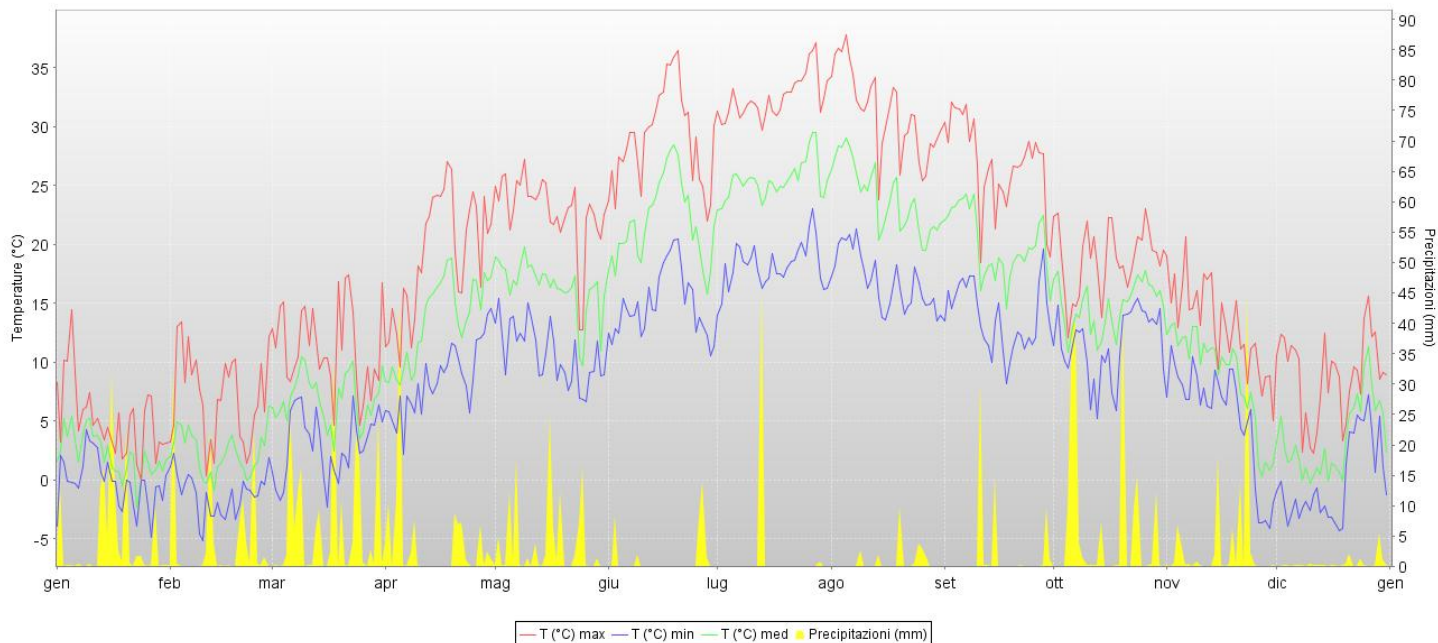




Stazione Agrometeorologica di Sabar Anno 2013



Aggiornamento al 15-10-2014	Valori annuali	Valori mensili											
		1	2	3	4	5	6	7	8	9	10	11	12
T min. Aria (°C)	-5.1	-4.9	-5.1	-2.2	2.2	6.5	10.6	14.0	13.5	8.1	5.1	-4.0	-4.3
T media Aria (°C)	13.3	2.2	2.3	6.9	13.7	16.4	21.9	25.4	23.9	19.8	14.6	8.6	3.4
T max. Aria (°C)	37.7	14.5	13.3	17.3	27.0	27.2	36.5	37.0	37.7	32.0	23.0	20.7	15.6
T media Suolo (°C)													
Precipitaz. (mm)	1121.4	133.4	108.4	202.8	113.2	113.6	33.1	46.5	22.9	56.2	181.7	100.1	13.4
Num. gg. pioggia	104.0	12.0	9.0	16.0	13.0	15.0	5.0	2.0	6.0	4.0	10.0	9.0	4.0
Indice Winkler	2032				125	205	370	494	446	305	149		
Indice Huglin	2589				204	319	499	632	584	428			

I dati di temperatura aria minima e massima sono da intendersi come valori estremi mensili.

