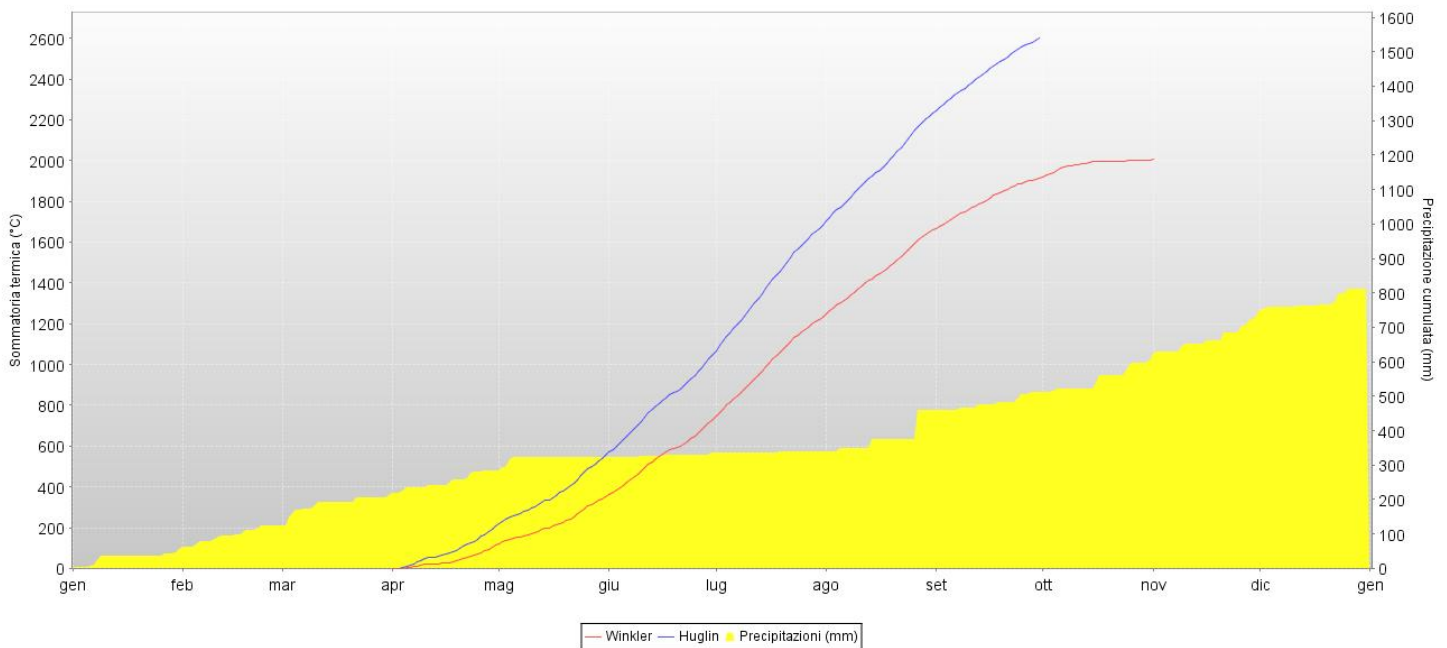
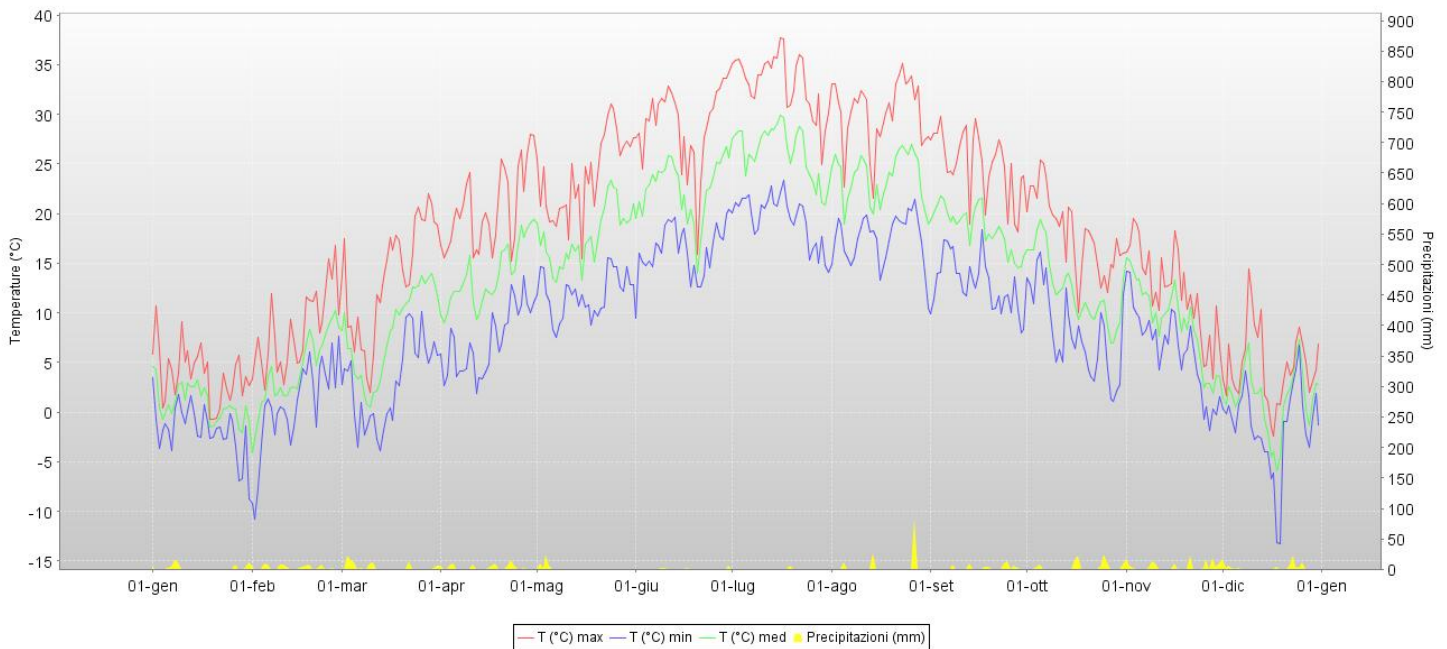




Stazione Agrometeorologica di Sabar Anno 2010



Aggiornamento al 05-01-2011	Valori annuali	Valori mensili											
		1	2	3	4	5	6	7	8	9	10	11	12
T min. Aria (°C)	-13.3	-9.1	-10.8	-3.9	1.8	7.5	9.5	14.1	9.8	8.0	1.1	-1.7	-13.3
T media Aria (°C)	13.2	0.7	4.1	8.1	13.8	17.7	22.6	26.2	23.5	18.4	12.5	8.8	1.4
T max. Aria (°C)	37.7	10.6	16.7	22.0	28.0	31.0	35.0	37.7	35.0	29.7	25.3	19.5	14.3
T media Suolo (°C)													
Precipitaz. (mm)	809.6	55.9	67.8	86.6	71.7	39.7	11.8	5.1	119.7	51.6	92.8	129.0	77.4
Num. gg. pioggia	93.0	8.0	13.0	9.0	11.0	4.0	4.0	1.0	3.0	8.0	8.0	13.0	11.0
Indice Winkler	2001				113	239	374	504	425	257	87		
Indice Huglin	2599				207	348	491	635	548	369			

I dati di temperatura aria minima e massima sono da intendersi come valori estremi mensili.

